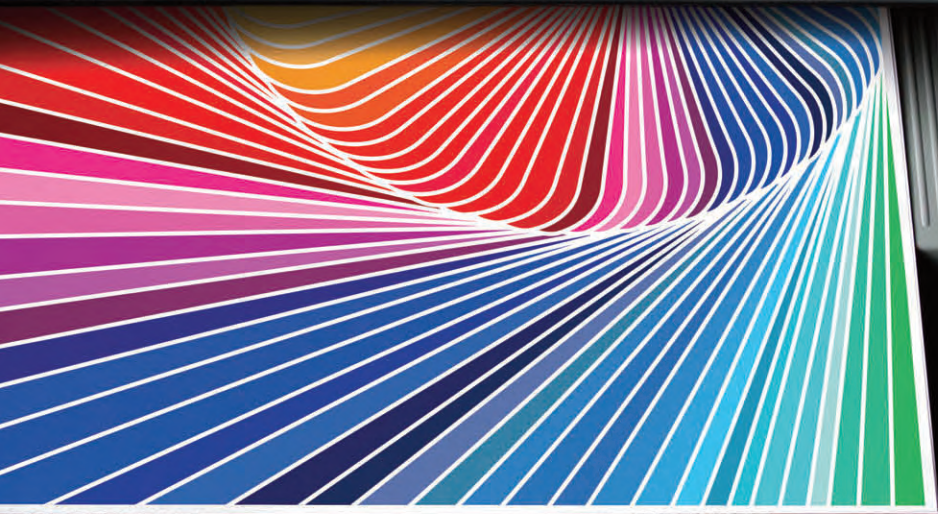




KONICA MINOLTA



Color Power: supercharge your workflow with bizhub color.



COUNT ON KONICA MINOLTA
bizhub C360/C280/C220

COUNT ON BIZHUB COLOR TO KEEP YOU COMPETITIVE AND HELP YOU COMMUNICATE MORE EFFECTIVELY. WITH EXCLUSIVE SIMITRI® HD TONER QUALITY, THE BIZHUB C360, C280 AND C220 PRODUCE SPECTACULAR COLOR DOCUMENTS AT HIGHER SPEED AND LOWER COST. KONICA MINOLTA ALSO LEADS THE INDUSTRY IN A WIDE RANGE OF OPTICAL AND ENGINEERING TECHNOLOGIES – THE ONES THAT HELP YOU WORK FASTER AND SMARTER. THE BIZHUB C360 SERIES OUTPERFORMS MONOCHROME DEVICES, STREAMLINES YOUR WORKFLOW, AND MAINTAINS COMPETITIVE TOTAL COST OF OWNERSHIP – AN UNBEATABLE BIZHUB COMBINATION.

Color that makes business look better than ever.

Your next-generation B&W replacement.

If you've been marking time with current B&W equipment, now's the time to move to color. The bizhub C360 Series gives you full-color print/copy/scan replacement with full MFP functionality – and without sacrificing B&W cost-efficiency.

Konica Minolta technology gives you higher color quality than conventional monochrome replacement printers can provide. That means any-sized business can produce superb full-color documents at the same speed as B&W – up to 36 ppm. You can mix color and B&W printing to meet the needs of each document. From finance and insurance to education, marketing and corporate communications, everyone will benefit from the bizhub advantage.

Even light-production office environments will benefit from accelerated processing, high output speed, and cost-effective printing to keep pace with rising demands. And there's a powerful option for the bizhub C360 and C280 in graphics-intensive applications: a Fiery® Print Controller with a host of color enhancements, including sophisticated color calibration, advanced queue management, and Fiery VUE for expert results without expert knowledge.

bizhub 

The beauty of Simitri HD Toner.

Smaller, more uniform particles. Energy-saving, low-temperature oil-less fusing. And brilliant, spectacular images with sharper detail and finer halftone definition – in color documents that won't crack, peel, or fade over time.

Konica Minolta's exclusive Simitri HD toner technology gives you all these advantages. In the bizhub C360, C280 and C220, you'll also have new advancements in color reproduction. Improved resolution, with 1800 dpi equivalent x 600 dpi. Smooth 256-grayscale gradation, for lifelike photos. Richer tonality, for vivid color graphics. And outline PDF, to smooth text edges for greater legibility.

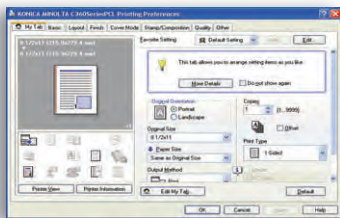
Industry-leading image stabilization helps speed your output, with settings that optimize performance for near 100% productivity in various applications. Improved image processing maintains excellent color uniformity through long-run print jobs – a real plus.

Sophisticated design, simple operation.

Konica Minolta has incorporated animated screens to guide you and make menus more user-friendly. You can also count on a wide range of new control advantages – including the industry award-winning speed and convenience of MyTab™ printing, so individuals can create a customized tab that saves their preferred print settings for quick access.

A large 8.5" color touch-panel display makes even first-time operators more productive. User-friendly controls, simple menus and programmable short-cut keys put more power at your fingertips. Thumbnails let you preview documents before you print, avoiding mistakes that waste time and paper. Using just one finger, a simple pull can open smooth-rolling paper drawers with lock-release levers. And easy-loading drawers, tilting control panel and clearly visible LED colors provide Section 508 compliance.

From every angle, the bizhub C360 Series is designed for good looks and great performance. Sleek dark cabinet color. Compact space-saving design. An InfoLine™ display that shows operating status at a glance, even from across the room. And using an optional Working Table (Side Panel Kit WT-507), you can remount your color touch-screen to the side of your bizhub for better fit in smaller spaces.

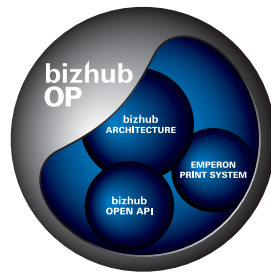


Industry award-winning MyTab™ convenience.

The built-in power of bizhub OP.

It drives the unique Konica Minolta approach to MFP performance: sophisticated functions, simple operation, seamless networking.

Designed for greater productivity, the proprietary bizhub OP (Open Platform) control system adheres, adapts and expands to the needs of your growing IT infrastructure. Exclusive bizhub Architecture gives you integrated performance, uniform operation and less need for operator training. The Emperon® Print System is built in, for full print/copy/scan functionality. And bizhub Extended Solution Technology (bEST) integration can interface seamlessly with print management, variable printing, cost control and other specialized software – all the advantages you need to do business right in the digital era.



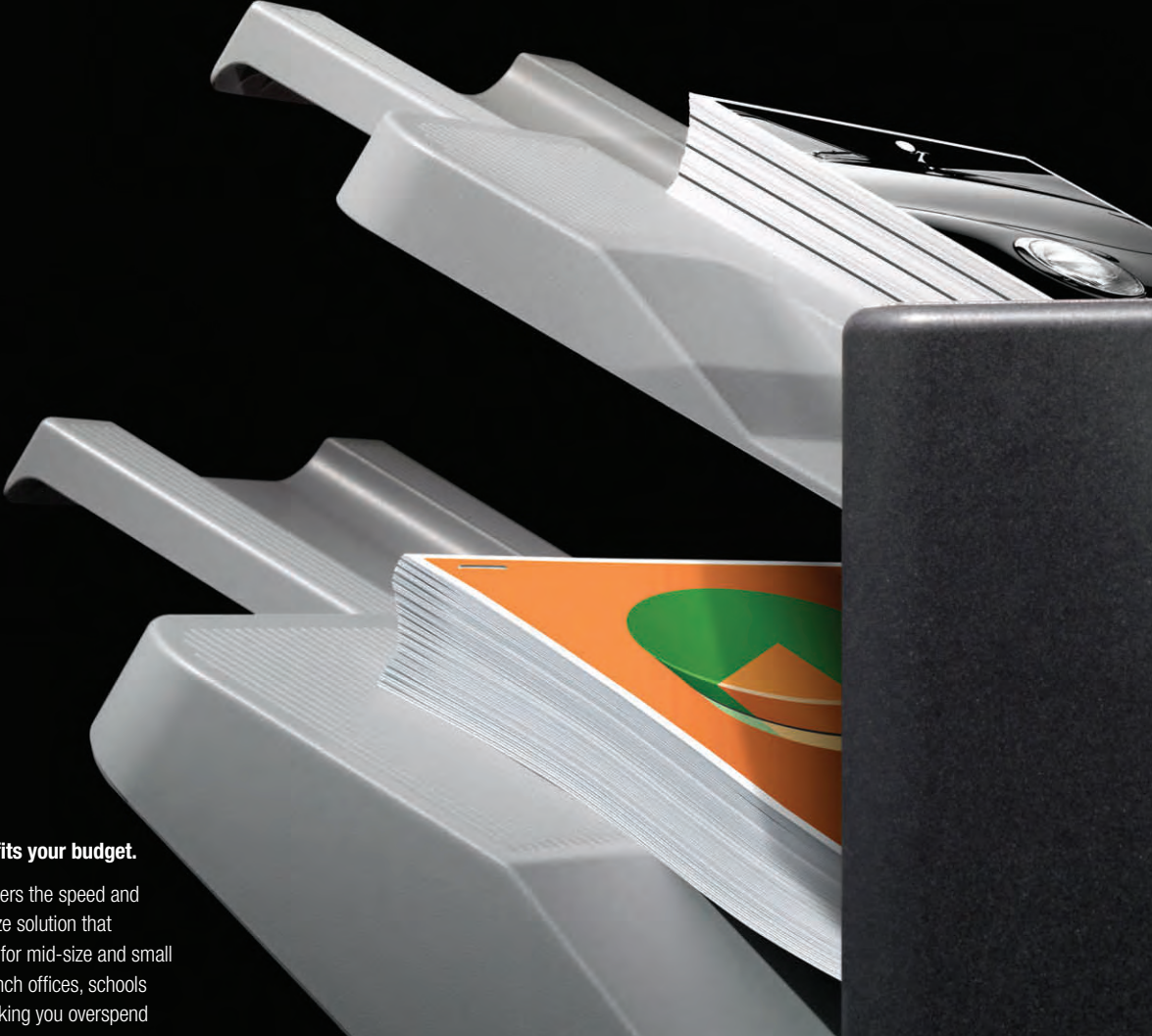
The importance of green technologies.

With Konica Minolta, the environment isn't an afterthought. Right from the start, we incorporate green technologies into every bizhub we make. Lower power consumption. Energy-saving operating modes. High-yield toner bottles designed for easy recycling.

We also cut down on emissions, minimize pollutants and utilize recycled materials wherever possible in our manufacturing operations – aiming for reduced environmental impact throughout the life cycle of each bizhub product.

While you work, the bizhub C360 Series is whisper-soft in printing, document feeding and standby modes, with quieter fan, smoother paper feed and reduced vibration – so everyone can get more done with less distraction.

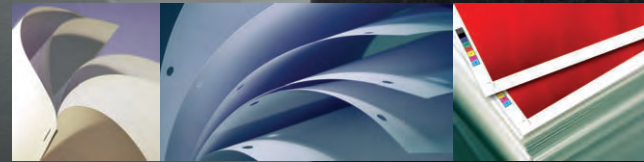




A right-size solution that fits your budget.

The bizhub C360 Series delivers the speed and power you need, in a right-size solution that satisfies document demands for mid-size and small businesses, workgroups, branch offices, schools and institutions – without making you overspend on equipment.

With the same print/copy output speeds in both high-impact color and cost-effective B&W, you can select the model that keeps pace with your document traffic: 36 ppm (C360), 28 ppm (C280) or 22 ppm (C220). Whichever you choose, improved RIP speed produces color prints faster. Scanning at up to 70 opm keeps information flowing throughout your organization. And quicker warm-up for B&W helps you get started in just seconds.



Printing that speeds document output and cuts costs.

FOR MID-SIZE BUSINESSES AND WORKGROUPS, IN-HOUSE COLOR PRINTING CAN SAVE SERIOUS MONEY. COUNT ON THE BIZHUB C360 SERIES TO PRINT HIGH-QUALITY COLOR JOBS MORE EFFICIENTLY: REPORTS, PRESENTATIONS, SALES AIDS, DIRECT-MAIL BROCHURES, TRAINING AND HUMAN RESOURCE MATERIALS THAT STRENGTHEN YOUR MESSAGE AND IMPROVE YOUR IMAGE. YOU'LL ALSO HAVE ADVANCED PRINT FUNCTIONALITY AND POWERFUL FINISHING OPTIONS – THE KEY TO HIGHER IN-HOUSE PRINT PRODUCTIVITY.

Standard front-panel USB connector for convenient saving and printing



Print control is built into your bizhub.

With built-in print control powered by Konica Minolta's advanced Emperon Print System, you can count on full print productivity right out of the box. Up to 1 GHz controller speed and 2 GB main memory give you all the power you need for higher output and superior quality – the kind standard printer/copiers can't match.

Windows Vista drivers, PCL6/PS3 emulations, and native XPS functionality handle print files in whatever format you need. The PostScript driver offers Auto Trapping and Black Overprint functions. And Universal Printer Drivers simplify print management with a common user interface, standard commands, and auto detection and configuration of devices to simplify IT control in multi-printer networks.

For total flexibility, you'll have Bluetooth® wireless printing (with optional EK-605), a standard front-panel USB connector for conveniently saving files to and printing from a USB thumb-drive, USB memory printing with document preview, and the ability to import/export files via USB memory to/from individual User Boxes.

Productivity, reliability, economy.

In action, the bizhub C360, C280 and C220 all bring you unsurpassed reliability and cost-efficiency. Internal components have been redesigned for longer life and greater accessibility. Large color toner capacity allows you to work longer. And separate black drum, separate color drums and individual CMYK developer units can be replaced as necessary to save even more.

Options to do more – and do it better.

Right-size scalability makes your bizhub a perfect match for the specific document needs of any application.

You'll have two finishing options: an internal Staple Finisher (FS-529), with 50-sheet 3-position stapling and electronic sorting – or a compact Floor Finisher (FS-527), with 50-sheet stapling and modular design for addressing your other auto-finishing needs: Hole-Punch Kit (PK-517) for 2/3-hole punching, Saddle Kit (SD-509) to create up to 60-page (15-sheet) booklets, and Job Separator Tray (Third Output Tray JS-603) to sort prints and copies more effectively.

The Banner Paper Tray (MK-713) even lets you stock up to 10 banner sheets to produce full-color banners up to 11-3/4" x 47-1/4". There's also a Job Separator Tray (JS-505) for sorting print/copy/fax output. Banner printing is supported with FS-529, FS-527, JS-505, or without finishing options. Please check the bizhub media guide for recommended banner paper.



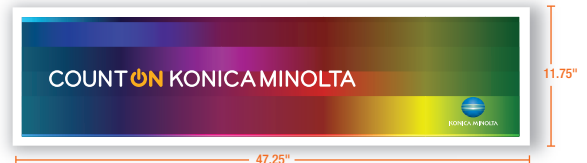
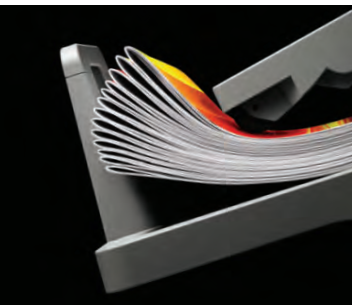
bizhub C360



bizhub C280



bizhub C220

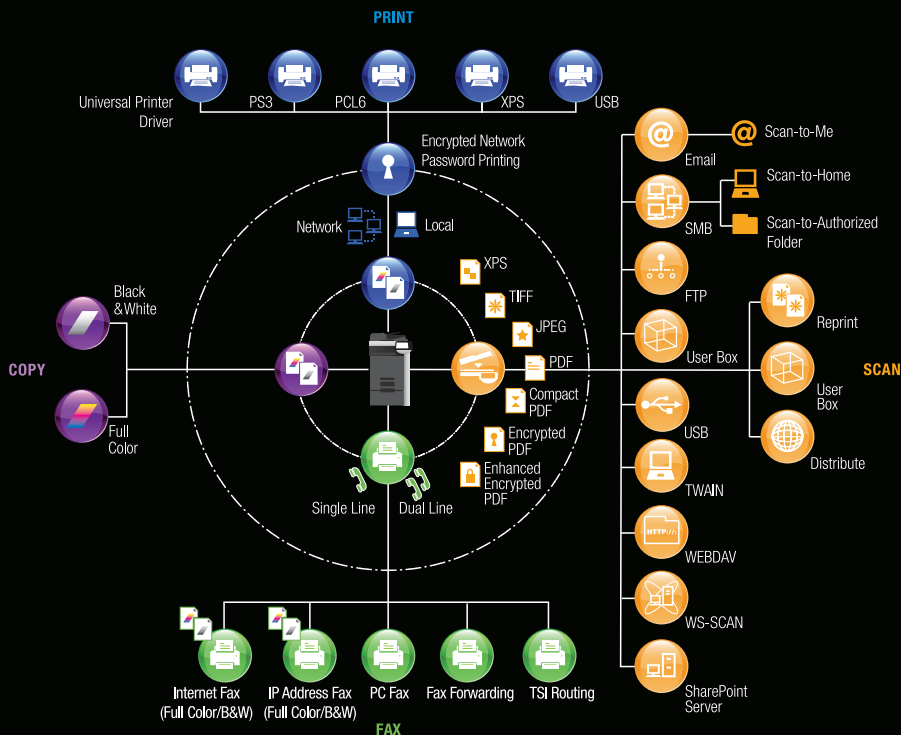


More printing, less waiting.

Every bizhub C360 Series model is built for speed. An optional high-capacity reversing auto document feeder lets you scan or copy originals in sizes up to 11" x 17". Proof Copy lets you check your output before making a full print/copy run. And you can print and automatically duplex up to 140 lb. index stock with 100% duplex productivity at rated engine speed.

For multi-page memos and reports, a corner-staple key is on the basic print menu for quick setup. In copy mode, you can automatically apply a transparent watermark to copies – and easily copy two-sided business cards, drivers' licenses and insurance cards with the new Card Shot feature.

Higher paper capacity lets you print or copy longer without reloading. An optional 2,500 sheet Large Capacity Cassette (PC-408) raises maximum paper capacity to 3,650 sheets. You can load up to 12" x 18" paper to print oversized graphics, 2-page spreads and color proofs preserving crop marks and borders.



Scan documents to multiple destinations.

With touch-screen simplicity, you can scan to Email, FTP, SMB, and perform TWAIN scanning from PCs. Scan-to-Me and Scan-to-Home let you quickly bring information into your personal workflow. A unique bizhub Send function lets you perform scan functions simultaneously – for example, Emailing a file to a co-worker while faxing it to an outside supplier and saving it to your FTP site.

User Boxes on your built-in 250 GB Hard Disk Drive give you dedicated storage for document creators, departments, workgroups, even projects. Quick access to User Box functions and User Box Routing enable you to share documents, move/delete/combine pages, even change resolution and color output settings.

WebDAV (Web-based Distributed Authoring and Versioning) support makes it easy to manage server files and folders, identify authors and dates, lock documents and track revisions. IPv6 support increases IP addressing power and security by giving every networked bizhub device its own IP address. And Gigabit Ethernet handles information more quickly to reduce traffic demands on your network.

Control that turns technology into productivity.

DIGITAL TECHNOLOGY CAN SPEED AND SIMPLIFY YOUR WORKFLOW – AND YOU CAN COUNT ON THE BIZHUB C360 SERIES TO HELP YOU MOVE INFORMATION FASTER. YOU CAN SCAN, SAVE, SHARE IN SECONDS. DISTRIBUTE FILES TO MULTIPLE DESTINATIONS. INCREASE YOUR THROUGHPUT WITH COLOR CONTROL, HIGH-VOLUME SUPER G3 FAX, AND UNIQUE I-OPTIONS. MAKE USE OF SPECIAL BIZHUB FEATURES CUSTOMIZED TO THE WAY YOUR BUSINESS WORKS. SAFEGUARD YOUR DATA WITH ADVANCED SECURITY FUNCTIONS – AND INCREASE YOUR PRODUCTIVITY WITH SEAMLESS NETWORKING SOFTWARE.



More ways to increase your throughput.

For all-in-one productivity, Color Internet Faxing and a Fax Kit option provide Super G3 speed, sophisticated transmission/reception features, Color Internet Faxing, PC and IP Address Faxing – along with an address book that holds thousands of locations, broadcasting and program dialing capabilities, and optional dual line to double your fax handling capacity.

Three unique Kona Minolta i-Option® Kits let you incorporate more special features into your bizhub system. The LK-101 v.2 i-Option Kit provides an AJAX-capable web browser for faster Internet access, Scan-to-SharePoint® convenience, and Image Panel interface to manage User Box files more easily. The LK-102 i-Option Kit gives you government-level AES 128-bit PDF encryption. And the LK-105 i-Option Kit adds searchable PDF functionality, so you can quickly locate text and data in PDF files.

Total security for the networked era.

Konica Minolta leads the industry in protecting sensitive information – conducting far more extensive security evaluations than our competitors do. All three bizhub C360 Series models are under evaluation for ISO 15408 Common Criteria security classification that meets the strict new requirements of version 3.1.

Standard security protections include bizhub Secure Print password locks, Customized User Authentication for printing, scanning, faxing and User Box, Encrypted PDF workflow to protect information passing from PC to network, IP Filtering to register IP addresses of PCs on your network, SSL/TLS Encryption to protect data during exchange with LDAP servers, and S/MIME Encryption to safeguard Email exchanges.

Optional security enhancements can increase your protection – with Copy Guard and Password-Protected copy functions (SC-507 required), Audit Log/Image log to track usage and control access.

There's more: optional HDD Lock, 3X HDD Job Erase function, and HDD sanitizing to overwrite data in 8 different modes to meet military and international standards.

Optional HID Proximity Card Unit (AU-201H) and Biometric Authentication Unit (AU-102), for secure access to bizhub MFP functions, and quick "ID and Print" operation.



IT power with PageScope software.

Finally, every bizhub C360 Series model lets you take advantage of Konica Minolta's integrated PageScope® software – powerful programs that work together to increase your productivity.

PageScope Enterprise Suite is a server-based accounting solution that tracks bizhub activities on a per-page basis, provides password-protected log-in with multiple ID authentication possibilities (Biometric, HID Proximity Cards, network user name and password), and customizes your bizhub display based on user log-in at any MFP on your network.

PageScope Web Connection gives each bizhub device its own "website" for simple setup and control. PageScope Net Care Device Manager lets IT administrators manage multiple devices from a single point. There's also PageScope Print Status Notifier, with automatic alerts to speed your workflow. PageScope Data Administrator™, to handle addresses, passwords, and accounts more easily. And PageScope Workware™, a personal and productive way to manage scanned documents, view thumbnail images, search files, link files, and convert file formats.

In any application, even with the busiest workloads at times of peak document traffic, your bizhub does it all.

Fire up your color graphics.



An optional IC-412 Fiery® Image Controller is available for the bizhub C360 and C280 – offering sophisticated color management and document printing tools. You'll be able to handle specific Pantone color requirements, manage print queues more effectively, and fine-tune color output with advanced control capabilities. Fiery Booklet Maker makes it easy to create sophisticated full-color booklets with supplied templates. And Fiery VUE gives creators an intuitive, icon-driven view of their documents – to orchestrate all elements into a professional high-impact result.



bizhub C220



bizhub C280



bizhub C360

General Specifications:

TYPE:	Full-Color Printer/Copier/Scanner with Stationary Platen		
PRINT/COPY PROCESS; TONER TYPE:	Tandem Process; Simitri® HD Toner		
MONTHLY DUTY CYCLE:	60,000 pages	75,000 pages	100,000 pages
PRINT/COPY SPEED:	Full Color & B&W: 22 ppm (letter, portrait)	Full Color & B&W: 28 ppm (letter, portrait)	Full Color & B&W: 36 ppm (letter, portrait)
PRINT/COPY RESOLUTION:	1800 dpi equivalent x 600 dpi		
SCAN SPEED/RESOLUTION:	Full Color: 70 opm (@300 dpi, letter), 42 opm (@600 dpi, letter), B&W: 70 opm (@300 dpi, letter), 42 opm (@600 dpi, letter)/200 dpi, 300 dpi, 400 dpi, 600 dpi		
SCAN FILE FORMATS:	TIFF, PDF, Compact PDF, JPEG, XPS, Compact XPS		
MEMORY/HARD DISK DRIVE:	2 GB (shared print, copy, scan and fax memory)/250 GB HDD (shared print, copy, scan and fax)		
GRADATION:	256 color shades per pixel		
ORIGINAL SIZE:	Up to 11" x 17" (scanning/copying), Up to 11" x 17" full bleed on 12" x 18" paper (printing)		
COPY SIZE:	Tray 1: 8.5" x 11" to 11" x 17", 5.5" x 8.5", 8" x 13", Tray 2: 8.5" x 11" to 12.25" x 18", 5.5" x 8.5", 8" x 13", Bypass Tray: 5.5" x 8.5" to 12" x 18", 12.25" x 18", 4" x 6", 8" x 13"		
WARM UP TIME (FULL COLOR/B&W):	Less than 27 seconds/Less than 22 seconds	Less than 35 seconds/Less than 27 seconds	
FIRST COPY TIME:	Less than 11 seconds/Less than 7.5 seconds	Less than 7.7 seconds/Less than 5.8 seconds	
COPY QUANTITY:	1-9,999		
MAGNIFICATION:	Zoom range: 25% - 400%, 0.1% increments, Preset reduction: 79%, 73%, 65%, 50%, Preset enlargement: 121%, 129%, 155%, 200%		
COLOR MODES:	Auto Color, Full Color, Black & White, 2-Color, Single Color		
COPY EXPOSURE MODES:	Text (legible text), Text/Photo (clear text and halftones), Photo (optimized for gradations), Map (fine edges and legible text), Dot Matrix (dot matrix or pencil originals), Copied Paper		
FAXING (OPTIONAL):	Super G3 compatibility, MH, MR, MMR, JBIG data compression, 33.6 Kbps modem speed, F-Code support		
FAX TRANSMISSION SPEED:	Less than 3 seconds/page (V.34, JBIG, Standard Resolution)		
FAX EXPOSURE MODES:	Text, Text/Photo, Photo, Dot Matrix, Copied Paper		
STANDARD PAPER CAPACITY:	500-sheet universal cassette (15.94 lb. bond to 140 lb. index), 500-sheet universal cassette (15.94 lb. bond to 140 lb. index), 150-sheet bypass (15.94 lb. bond to 100 lb. cover or up to 271 gsm)		
MAXIMUM PAPER CAPACITY:	3,650 sheets (total, with options)		
DOCUMENT FEEDER (OPTIONAL):	Reversing Automatic Document Feeder, Speed: Full Color: 70 opm, B&W: 70 opm, Paper Capacity: 100 sheets, Paper Size: 5.5" x 8.5" to 11" x 17" Paper Weight: Single-sided: 9.25 lb. bond to 55.75 lb. bond, Double-sided or mixed: 13.25 lb. bond to 34 lb. bond		
POWER REQUIREMENTS/CONSUMPTION:	120V, 60Hz/Less than 15kW		
DIMENSIONS (W x D x H)/WEIGHT:	25.31" x 33.38" (27.75" without control panel) x 35.38" (includes RADF)/216 lb.		
OPTIONS:	AU-102 Biometric Authentication Unit, AU-201H HID Card Authentication Unit, DF-617 RADF, DK-507 Copy Desk, EK-604 USB Interface for External Keyboard, EK-605 USB Interface for External Keyboard and Bluetooth Support, External Keyboard, C652 Series/C360 Series Fax Kit, FK-502 Fax Board, FS-527 Floor Finisher, FS-529 Inner Finisher, IC-412 Image Controller (EFI Fiery Controller)*, JS-505 Job Separator Tray, JS-603 Job Separator Tray (3rd Output Tray), KH-101 Keyboard Holder, LK-101 v2 i-Option, LK-102 i-Option, LK-105 i-Option, MK-713 Banner Paper Guide, MK-720 Fax Connection Kit, OC-509 Original Cover, PC-107 Paper Feed Cassette, PC-207 2-way Paper Feed Cassette, PC-408 Large Capacity Cassette, PK-517 Punch Kit, SC-507 Copy Guard Kit, SD-509 Saddle Stitcher Kit, Spare TX Marker Stamp 2, SP-501 Fax Stamp Unit, UK-203 i-Option Memory Upgrade Kit, WT-506 Working Table, WT-507 Working Table (Side Panel Kit), VI-505 Video Interface Kit for IC-412*		
AVAILABLE PRINT/COPY FUNCTIONS:	Account Track (1,000 accounts), Administration Mode, Auto Duplex, Auto Trapping, Auto Tray Switching, Bi-Directional Communication, Black Over Print, Bluetooth Printing, Card Shot, Color Modes & Functions (Auto Color/Full Color, Black & White Mode, Single Color Mode, 2-Color Mode), Color Adjustments, Copy Guard, Copy Modes (Simplex/Duplex, 2-in-1, 4-in-1, 8-in-1, Book, Booklet, Booklet + Bind), Cover Mode, Creative Functions (Mirror Image, XY Zoom, Image Center, Base Color, Neg./Pos. Reverse, Image Repeat), Encrypted Network Password Printing, Energy Save Mode, Enlarge Display, Erase (Border, Frame, Edge), Mode, Finishing (Group, Sort, Staple, Punch, Half-Fold, Center Staple and Fold), Form Overlay, Glossy Mode, HDD Encryption, HDD Job Overwrite, HDD Sanitizing, Image Adjustments (Color Matching, Pure Black Auto ON/OFF, Color Balance, Screen Settings, Image Smoothing ON/OFF), Image Preview (Job Finishing Image Display, Engine Configuration Display), Import/Export files to/from User Box, Interrupt, Job List, Job Reserve, Job Skip, LDAP, Mixplex, Mix-Media, MyTab, Non-image Area Erase, OHP Interleaving, Outline PDF, Program/Recall Jobs, Paper Type Selection, (Normal, Thick 1, Thick 2, Thick 3, Thick 4), Password Copy, Print Modes (Simplex/Duplex, 2-in-1, 4-in-1, 6-in-1, 9-in-1, 16-in-1, Booklet, Booklet + Bind), Print from USB, Proof Copy, Searchable PDF, Secure Printing, Separate Scan, Text Enhancement, User Authentication (Up to 20 Authentication Servers) (Synchronize w/Account Track), User Box Function, Utility (Meter Count, Environment Setting, Default Setting, One-Touch Setting, Check Consumables Life), Watermark, Zoom Selection		
AVAILABLE SCAN FUNCTIONS:	Scan-to-Email, Scan-to-FTP, Scan-to-HDD (Scan-to-User Box), Scan-to-Me/Scan-to-Home, Scan-to-SharePoint, Scan-to-SMB (Scan-to-Desktop), Scan-to-USB, Scan-to-WebDAV, Network TWAIN, WS-Scan, Color Internet Fax		
AVAILABLE FAX FUNCTIONS:	Autodialing (2,000 one-touches), Auto Memory Reception, Auto Reduction Printing, Broadcasting (maximum 605 locations), Bulletin Board, Duplex Transmission/Reception, Exposure Mode, Group Dialing (up to 500 one-touches per group), Image Rotation Transmission/Reception, Mailbox Transmission/Reception, Memory/Quick Dial, Overseas Transmission, Password Transmission/Reception, PC-Fax, Polling Transmission/Reception, Priority Transmission, Print Setting or Overnight Reception, Program Dialing (400 programs), Redial, Relay Broadcasting, Relay Transmission, Remote Reception, Timer Transmission, TSI Routing		
APPLICATIONS:	Network & Device Management: PageScope Data Administrator, Driver Packaging Utility, HDD Back-Up Utility, Download Manager (ICC Color Profile Utility), Log Management Utility, User Tools: PageScope Web Connection, PageScope Direct Print, PageScope Box Operator, PageScope Print Status Notifier, Font Management Utility, Copy Protect Utility		
MANAGEMENT TOOLS:	bizhub vCare support		
OPTIONAL SOFTWARE:	PageScope Workware, PageScope Enterprise Suite: PageScope Account Manager, PageScope Authentication Manager, PageScope My Panel Manager, PageScope Net Care Device Manager (standard)		

Emperon Print System:

PROCESSOR:	667 MHz (MPC8533E)	1 GHz (MPC8533E)
MEMORY/HDD:	2 GB (shared copier memory)/250 GB (shared copier HDD)	
PAGE DESCRIPTION LANGUAGE:	PCL5e/c, PCL6 (XL v.3.0) Emulation, PS3 (v.3016) Emulation, XPS v.2.1.4.0 (XML Paper Specification)	
FONTS:	PCL: 80 fonts, PostScript 3 Emulation: 137 fonts	
PRINT DRIVERS:	PCL6: Windows 2000 Professional, Windows NT 4.0, Windows Server 2003 (x32, x64), Windows XP Home/Professional (x32, x64), Windows Vista (x32, x64), Windows Server 2008 (x32, x64), PS3: Windows 2000 Professional, Windows Server 2003 (x32, x64), Windows XP Home/Professional (x32, x64), Windows Vista (x32, x64), Windows Server 2008 (x32, x64), Universal PS3 and PCL: Windows 2000, Windows XP, Windows Server 2003, Windows Vista, Windows Server 2008 (x32, x64), XPS: Windows Vista (x32, x64), Windows Server 2008 (x32, x64), Mac: Mac OS 9.2 (PPD file), Mac OS X 10.2, 10.3, 10.4, Intel-based 10.4 (print driver), Intel-based 10.5	
INTERFACE:	10 Base-T/100 Base-TX/1000 Base-T, USB 1.1, USB 2.0, USB Host	
PROTOCOLS:	TCP/IP (IPv4/IPv6), BOOTP, ARP, ICMP, DHCP, DHCPv6, AutoIP, SLP, SNMP, FTP, LPR/LPD, RAW Socket, SMB, IPP, HTTP, POP, SMTP, LDAP, NTP, SSL, IPX/SPX, AppleTalk, Bonjour, NetBEUI, WebDAV, DPWS, S/MIME, IPsec, DNS, Dynamic DNS, LLNMR, LLTD	

Fiery IC-412 Embedded Image Controller* (option for C360 and C280 only):

PROCESSOR; MEMORY/HARD DISK DRIVE:	Intel Celeron 1.86 GHz FSB 533 MHz; 512 MB (standard/max)/80 GB HDD
PAGE DESCRIPTION LANGUAGE; FONTS:	PCL6, Adobe PostScript 3 (version 3017); PCL: 80 fonts, Adobe PS3: 136 fonts
PRINT DRIVERS:	PCL6, PS3: Windows 2000, Windows XP (x32, x64), Windows Server 2003 (x32, x64), Windows Vista (x32, x64), Windows Server 2008 (x32, x64)(utilities only) Mac: OS X 10.3.9, 10.4, Intel-based 10.4 (PPD), 10.5 or later Native Mode, Unix/Linux
INTERFACE:	10 Base-T/100 Base-TX/1000 Base-T, RJ45
PROTOCOLS:	TCP/IP, IPX/SPX, AppleTalk (EtherTalk), LPR, SMB, NDPS Gateway on Netware 5.0 or later, IPP, LDAP, SSL/TLS, SNMP, HTTP/HTTPS, IPv6
STANDARD SOFTWARE:	EFI Command Workstation, ColorWise ProTools, EFI Spot-On, EFI WebTools, Fiery Remote Scan, Fiery VUE
OPTIONAL SOFTWARE:	EFI Hot Folders/Virtual Printers, Auto Trapping, Color Profiler Suite, EFI Impose, Secure Erase, ES-1000 Spectrophotometer

* Fiery not available for bizhub C220



KONICA MINOLTA

Konica Minolta Optimized Print Services offers a full suite of device output services and workflow solutions that increase efficiency and control costs. Please contact your authorized Konica Minolta sales representative for details.

COUNT ON KONICA MINOLTA

KONICA MINOLTA BUSINESS SOLUTIONS U.S.A., INC.
100 Williams Drive
Ramsey, NJ 07446

© 2009 KONICA MINOLTA BUSINESS SOLUTIONS U.S.A., INC. All rights reserved. Reproduction in whole or in part without written permission is prohibited. Konica Minolta and The essentials of imaging are trademarks of KONICA MINOLTA HOLDINGS, INC. bizhub, Emperon, and PageScope are trademarks of KONICA MINOLTA BUSINESS TECHNOLOGIES, INC. Simitri is a registered trademark of KONICA MINOLTA BUSINESS SOLUTIONS. Fiery and the Fiery logo are trademarks of EFI. Bluetooth is a registered trademark of Bluetooth SIG, Inc. ABBYY and FineReader are registered trademarks of ABBYY Software House. All other brands and product names are registered trademarks or trademarks of their respective owners. Design & specifications are subject to change without notice. Some functions may require options, which may or may not be available at time of launch.

www.CountOnKonicaMinolta.com
www.kmbis.konicaminolta.us



Item #: C360BRO
9/09